

NEW GAME COLOR

# HULK



*ACT*

The product is fit for GBC/A machine

# Catalogue

Catalogue	02
story outline	03
button setting	04
Characteristics	05
introduction	07
Status column	08
Game procedure	10
Frame appreciation	13
memo	14

# 1 Story outline

Doctor Bruce Banner, a respected scientist, worked for the US Department of Defense, doing researches on the new bomb of Gamma rays. During a routinely test day, to save his co-worker, Banner gave Harper, the only available mask, and blocked the Gamma rays as they were released from the device.

Banner absorbed a dose of Nanomeds and was bombarded by the Gamma rays. He passed out. But, miraculously, Bruce did not perish. Bruce was feeling better than ever. When he became agitated he turned for the first time into the Hulk. The Hulk went in a rampage, and destroyed many parts of the lab. The US Armed Forces were to arrest him and get secret, suspecting that Bruce was involved in the lab incident.

# 1 Button setting



## Button A

Communications and opening the treasure box

## Button B

Cancel last time's choice

## Cross button

Manipulations of the directions of the ships

## Selection button

The introductions of the health condition

## Start button

start proogue

# 1 Characteristics

## Characteristics

### 1 . Four barriers

Backgrounds: the residential district, the basement, the burgh, the base.

2 . The leading character has the ability to turn different between the ordinary man (PL02) and the hulk (PL01).

In the game, the player can collect energy continuously and you can do it only three times. When your get the full energy, the leading character will turn into Hulk.

## 2 Characteristics

### *Characteristics*

3 . PL01 can smash the stone and barriers, and move on.

PL02 can crouch to creep through the narrow place, which will provide many more possibilities in the change of the background.

4 . Tools: PL01 uses iron hammer, super destructive power attack. PL02 uses firearms, long range attack.

# 1 Instruction



The Hulk:  
the leading  
role with  
the ability to turn  
different between the  
ordinary man (PLO2) and the  
hulk (PLO1).

The blue blood man: the  
final boss in the game, he  
is the secret weapon of the  
military, driving a tank to  
fight with the leading  
character.

# 1 Status column

Status column

The leading character with full blood volume, five checks, injured once losing one check.

Get treasure

(heart appearance) then the blood volume will increase 3 checks. Get an apple, one check.



## 2 Status column

### Status column

The energy is full with 20 drops, and will increase 1 drop every 10 seconds. The player can collect energy continuously which is counted in numbers and you can do it only three times. When your get the full energy, the leading character will turn into Hulk.

# 1 Game procedure

Game procedure  
1 Doctor Bruce Banner, a respected scientist, worked for the US Department of Defense, doing researches on the new bomb of Gamma rays.



## 2 Game procedure

2. During a routinely test day, to save his co-worker, Banner gave his colleague, Harper, the only available mask, and blocked the Gamma rays as they were released from the device. Banner absorbed a dose of Nanomeds and was bombarded by the Gamma rays.



## 3 Game procedure

3. He passed out. But, miraculously, Bruce did not perish. Bruce was feeling better than ever. When he became agitated he turned for the first time into the Hulk.

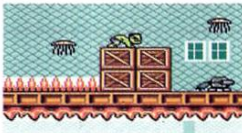


4. The Hulk went in a rampage, and destroyed many parts of the lab. The US Armed Forces were to arrest him and get secret, suspecting that Bruce was involved in the lab incident.



1

# Frame appreciation





# MEMO

---

---

---

---

---

---

---

---



# MEMO

---

---

---

---

---

---

---

---

# HULK



Please don't use and place the product in high or low temperature, avoid hitting roughly, don't touch the pin or make it dirty or we ,and these may make the product conk out.

please protect your eyes, avoid playing too long time.

The product is fit for **GBC/A** machine